



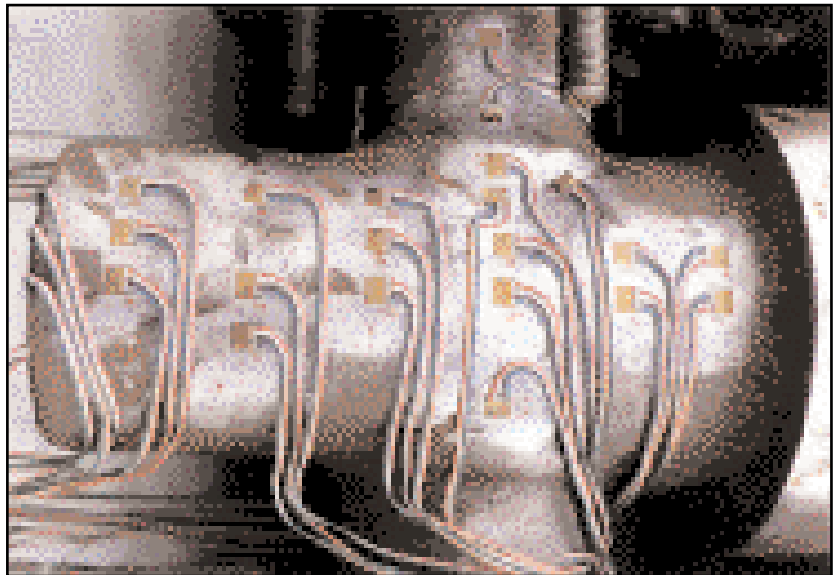
SES PROCESS TECHNOLOGY GROUP

A Division of Stress Engineering Services, Inc.

Houston 281-955-2900 • Cincinnati 513-336-6701 • New Orleans 504-828-4066

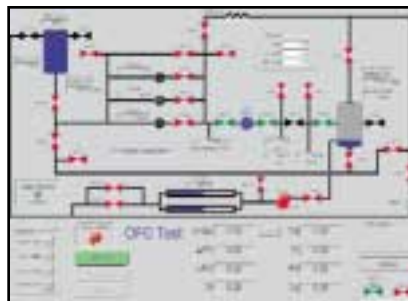
Solving Difficult Data Acquisition, Control and Presentation Problems

As a National Instruments Alliance Program member, Stress Engineering Services routinely undertakes projects with unique, complex and challenging data acquisition requirements. This work may be as intricate as measuring and controlling electrical impulses in a human muscle, or as extensive as measuring loads requiring our 4 million pound load frame. In addition to developing strain gage data acquisition and reduction programs based on National Instruments hardware and software, SES offers clients a broad range of services that include:



Strain gage testing of a valve body

- Control systems, sensors and transducers.
- Test station integration.
- Test configuration, control and automation.
- Custom load frame design.
- Hardware specification, customization and implementation.
- Software design, development and maintenance.
- GPIB, VXI, Serial and DAQ I/O Interfaces.
- Biomedical monitoring.
- PID Control.



Cryogenic valve test control panel



Custom LabVIEW control diagram

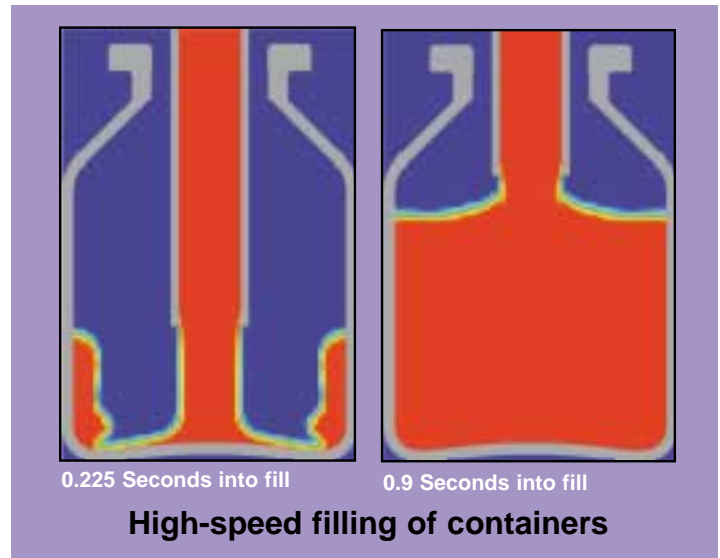
A Full Range of Process Engineering Services

Real Solutions to Complex Analysis problems.

The Process Technology Group specializes in using advanced technologies like finite element analysis (FEA) and computational fluid dynamics (CFD) to predict the performance of components and systems. By combining our engineering and design expertise with computer-based process modeling and manufacturing equipment/materials simulation, we help clients save time and money.

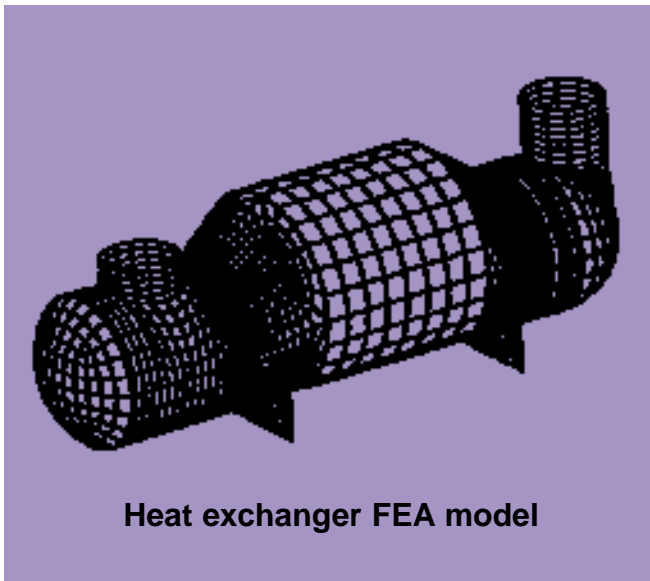
The benefits of predictive engineering include:

- Reduced design iterations and downstream rework.
- Accelerated development cycles.
- Evaluation of alternative materials.
- Avoiding costly failures.



Expertise Built of Experience

Stress Engineering Services has been applying advanced technologies to the solution of real world engineering problems for more than two decades. As a result, we offer clients an exceptionally broad base of experience, supported by a vast array of hardware and software tools, all under one roof. Some of the types of problems we routinely address include:



- Heat transfer and fluid mechanics
- Structural finite element analysis (FEA)
- Product and machine design
- Vibration analysis and measurement
- Creep and fatigue analysis
- Crash simulation
- Pressure vessel and piping design and analysis
- Computational fluid dynamics (CFD)
- Packaging design
- Welding procedure development
- Failure analysis
- Patents and trade secrets research
- Systems integration for data acquisition
- Field and on-site testing
- Software development
- Custom circuit design

**For further information on how the
SES Process Technology Group can help you solve your
difficult data acquisition, control and presentation problems
contact the SES office nearest you today**

...or visit our web site at <http://www.stress.com>

Houston 281-955-2900 • Cincinnati 513-336-6701 • New Orleans 504-828-4066