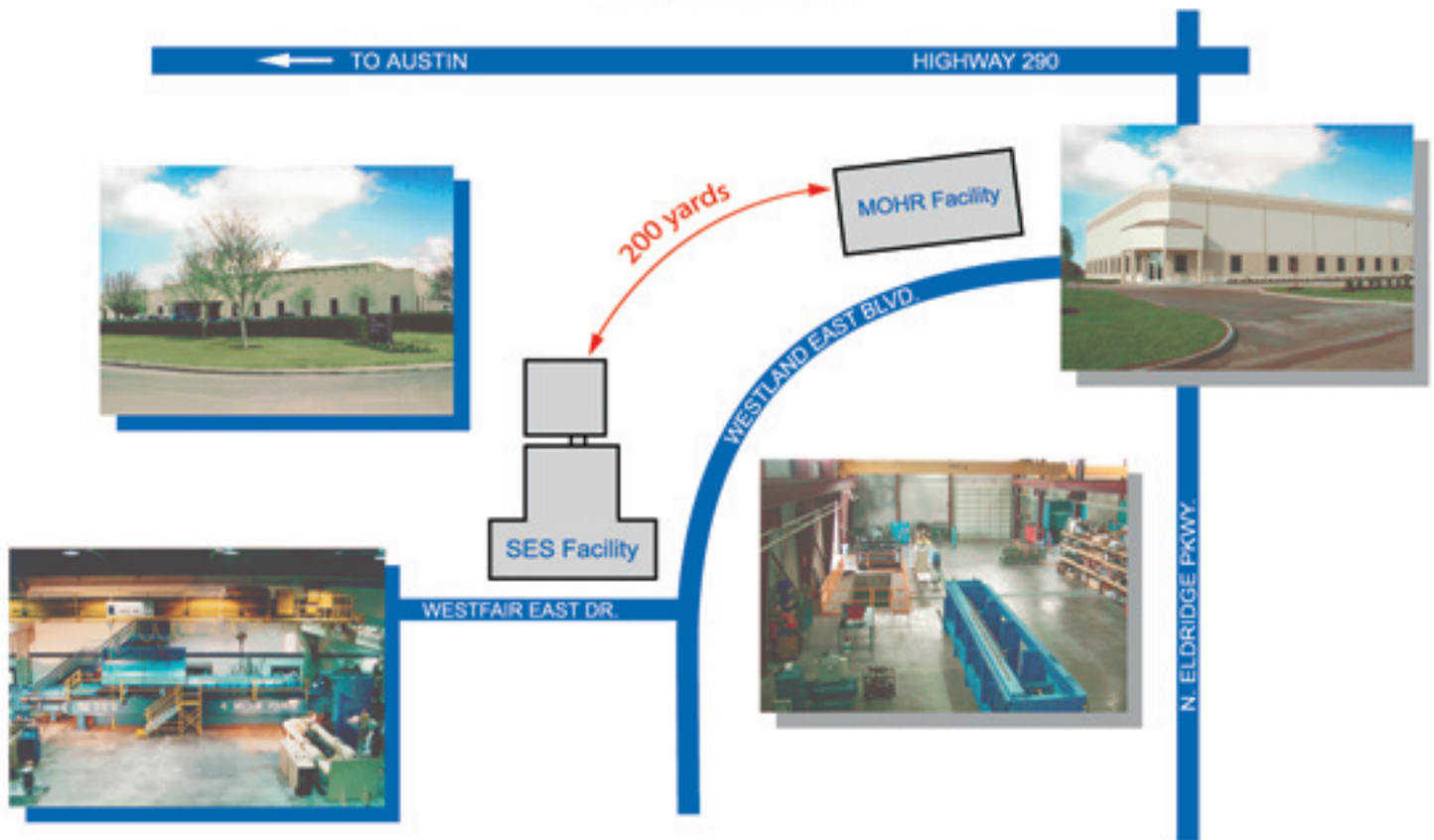


STRESS ENGINEERING SERVICES, INC.

TESTING FACILITIES

Houston, Texas



STRESS
ENGINEERING
SERVICES, INC

15,000 sq. ft. **Laboratory**

17,500 sq. ft. **Lab Expansion** (Jan '05)

20 ton **Cranes**

6 **Load Frames**

3 **Power Tongs**

10,000,000 lbs. **Capacity**

50,000 psi **Pressure**



17,500 sq. ft. **Laboratory**

20 ton **Cranes**

4 **Load Frames**

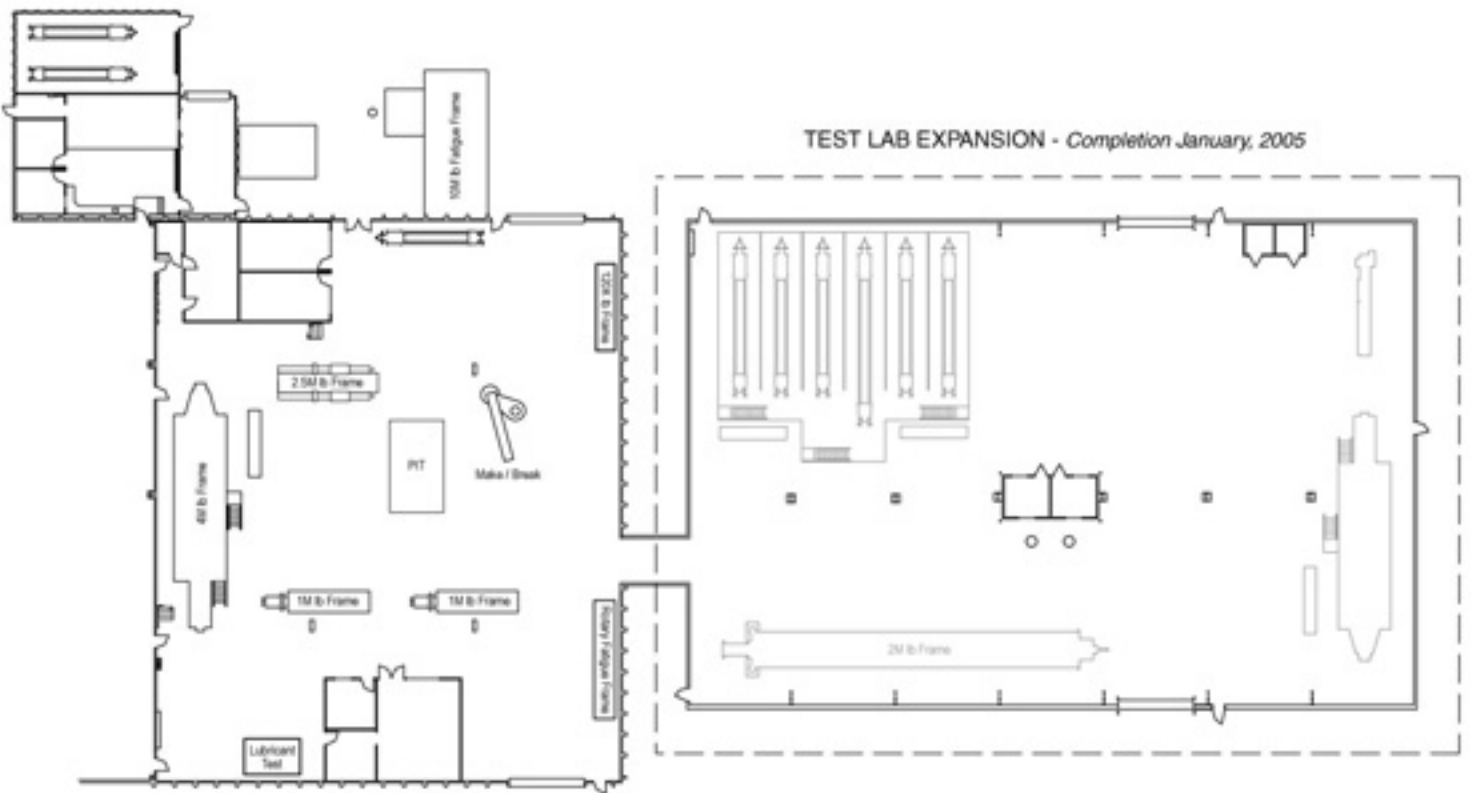
13,000 fsw **Hyperbaric Chamber**

3,000,000 lbs. **Capacity**

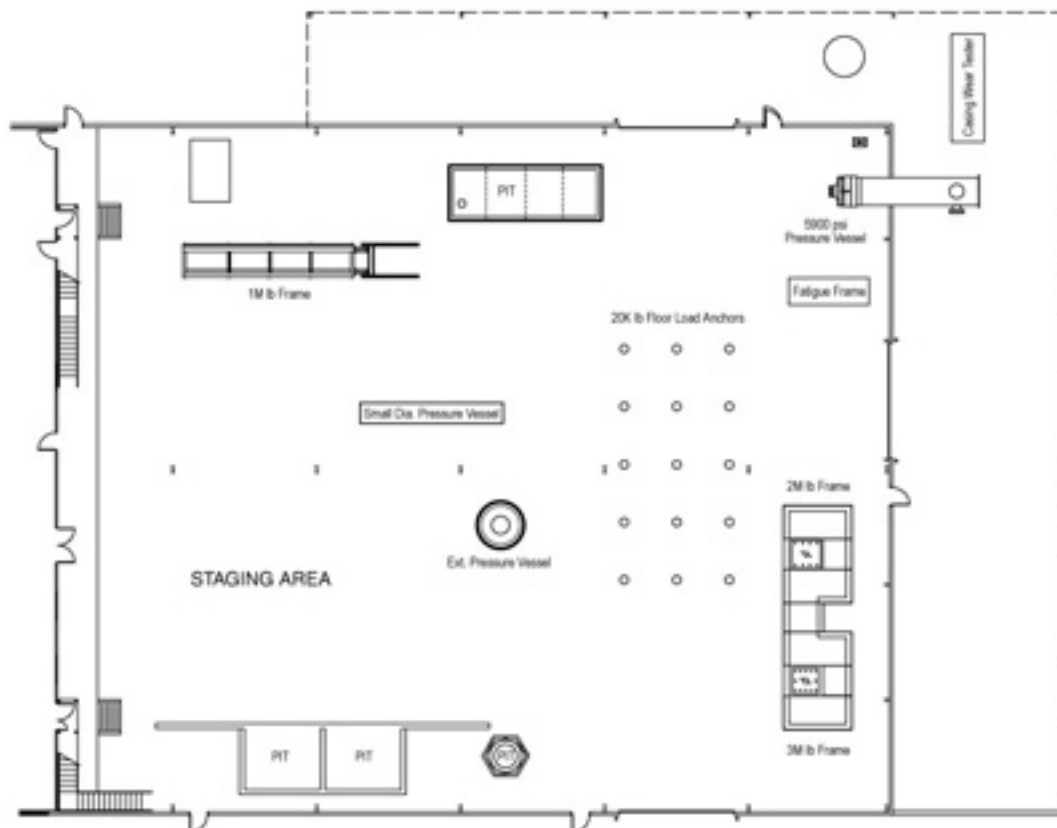
50,000 psi **Pressure**

13800 Westfair East Drive
Houston, Texas 77041
Phone: 281.955.2900 Fax: 281.955.2638

13602 Westland East Blvd.
Houston, Texas 77041
Phone: 281.469.2177 Fax: 281.469.2217



STRESS ENGINEERING TESTING FACILITY
(Houston, Texas)



MOHR ENGINEERING DIVISION TESTING FACILITY