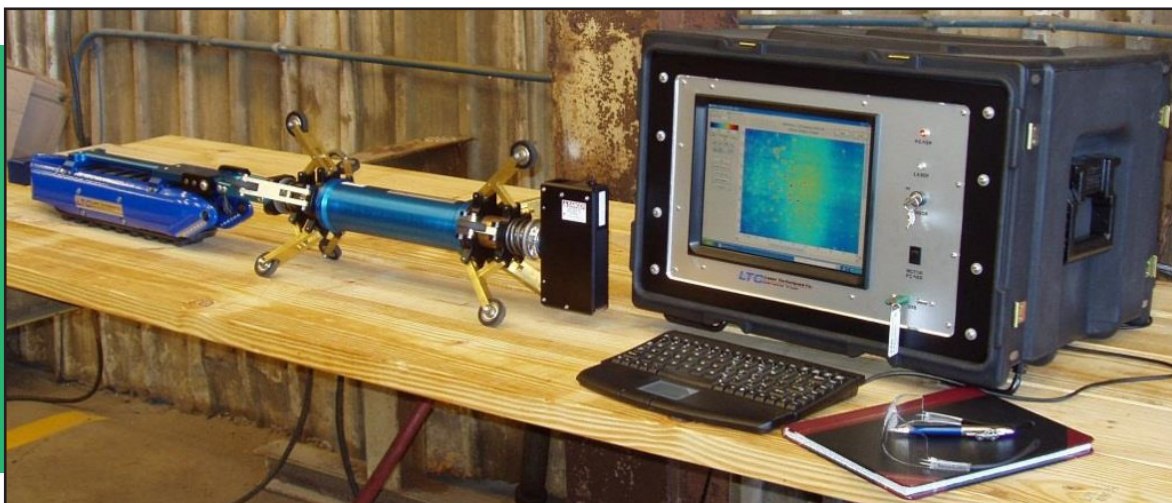


# Laser Pipe Inspection Services

The new frontier in tubular data acquisition and analysis

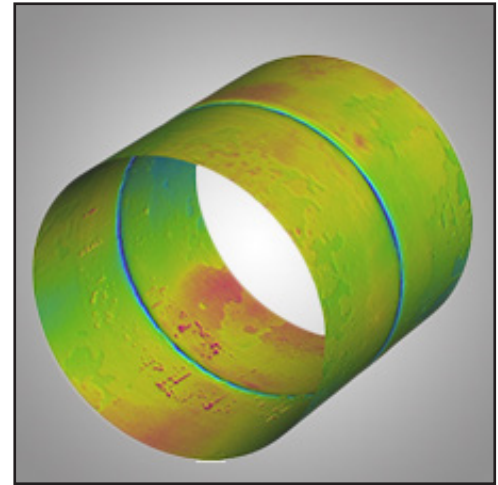
At Stress Engineering Services, our Laser Pipe Inspection service delivers a revolutionary level of oilfield inspection, designed to benefit those with a stake in identifying and managing risks and the deterioration of their tubular assets. The service combines non-destructive testing, asset condition-based maintenance and monitoring, predictive data analytics and IoT ecosystem to manage and assess baseline and degradation in tubulars.



Utilizing the high-performance Bore Erosion Measurement and Inspection System (BEMIS™) tool, developed by Laser Techniques Company LLC, we are capable of rapidly, accurately, and quantitatively mapping the internal surface of 2" - 22" diameter pipes. The BEMIS™ laser sensor is the only system on the market that accurately measures and maps the ID of pipe/tubing, rotating at high speed through the length of a tubular, typically generating upwards of 5000+ data points per revolution.

These high-resolution data points are harnessed and analyzed using LaserViewer™ software to:

- Determine material loss due to pitting and/or mechanical wear.
- Characterize features to deduce if they were caused by wireline, drill pipe, corrosion, or a manufacturing flaw.
- Perform a detailed analysis of the entire tube, including the pin end and ID weld dimensions, and locations where UT cannot provide adequate inspection.

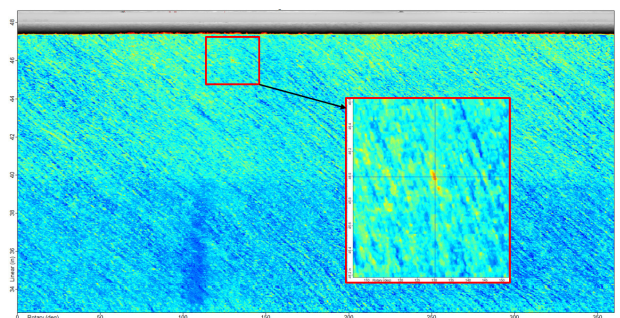
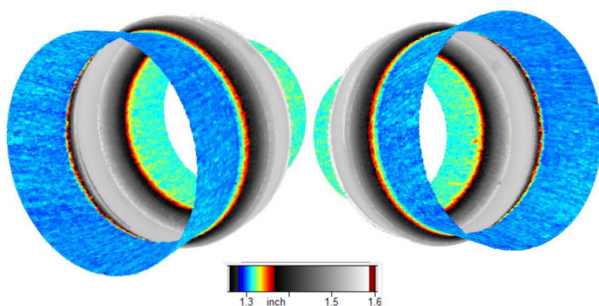


The result is a high-resolution 3D map of the component inner surface and a rapidly delivered report summarizing the anomalies and their location on the tube, providing a digital record of the asset.

### Applications include:

- Highly accurate pipe and Drill Pipe ID and volume measurements
- Inspection of drilling and production risers for return to service
- Frac High Pressure Hose “CoFlex” and iron inspection for erosion
- Investigative “CSI” work for a failed work string or tubing
- Degradation determination of tubular assets, i.e. corrosion, erosion and pitting, etc.
- Production tubing inspection including coupling

The Laser Pipe Inspection Service is part of a wider suite of our services, engineered to deliver the most reliable and complete information necessary for making critical decisions.



HOUSTON  
281.955.2900

CINCINNATI  
513.336.6701

WALLER  
281.671.2550

CALGARY  
403.256.2527

13800 Westfair East Drive ▪ Houston, Texas 77041  
visit us on the web at [www.stress.com](http://www.stress.com)