

SES Medical Technologies

SOFTWARE SYSTEMS

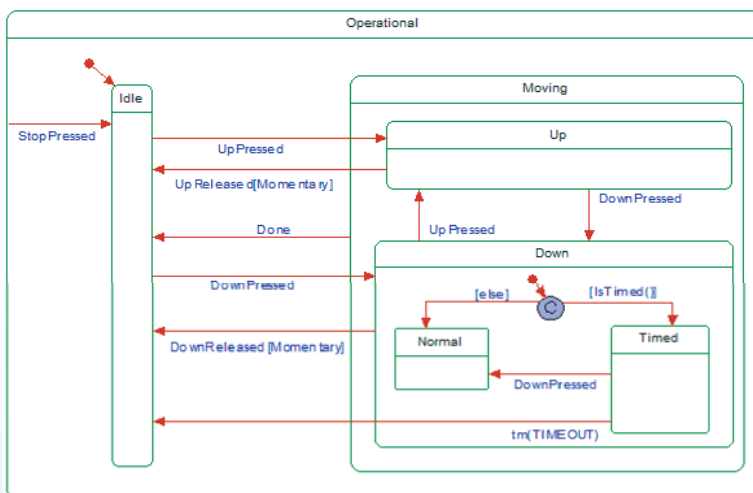
ISO 9001:2008 & ISO 13485:2016 Certified

Take the Stress out of Software Development.

You know Stress as a structural analysis & design company, but did you know we also do software?

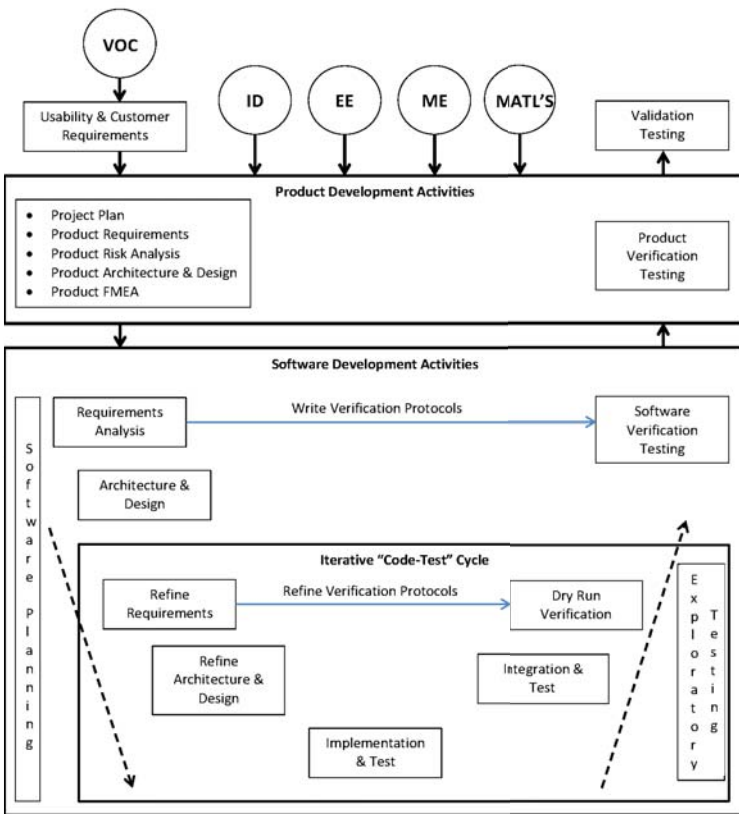
The embedded software development resource at Stress Engineering Services (SES) is designed from the start to provide tight integration of user interface, controls, electrical hardware and mechanical systems.

SES leverages the collaborative efforts of our software group with our co-located industrial design team, electrical hardware and mechanical designers, as well as our specialists in thermal management, fluidics, and materials to deliver high performance systems.



SES is the place to go for your sophisticated embedded software needs including:

- Voice of the Customer (VOC) and Requirements Development
- Architecture & Design
- Implementation
- Reviews
- Test Protocol Development
- Verification and Validation Testing
- Project & Risk Management and Regulatory Documentation



SES has the ability to develop and document software compliant to:

- IEC 60601-1
- IEC 62304
- IEC 62366
- ISO 14971
- ISO 13485 and
- FDA Design Controls 21 CFR Part 820.30

SES has a proven software development process that focuses early on:

- risk management including risk analysis and software FMEA
- requirements development
- architecture & design and
- small iterative “code-test” cycles

to build software quality throughout the process, reduce overall development costs and improve time to market.

SES has expanded our technical team and resources to provide fully-integrated software development that ensures your device delivers an exceptional user experience, superior device control, and high reliability.

SES has over 40 years of real-time embedded systems experience, including 25+ years in the medical device industry. This expertise includes software project management over the full product development lifecycle.

SES has significant knowledge and experience to meet your needs for software and full product development. With these capabilities, SES provides a unique, fully integrated one-stop-resource for your analysis, engineering and product development needs.

For Highly-Integrated Embedded Software Development and Support Services,
Call SES Today at 513-336-6701

ON THE WEB AT **WWW.STRESS.COM**

CINCINNATI • HOUSTON • IRVINE • CALGARY

